



THE WESTMOUNT

398 ROOSEVELT AVENUE
OTTAWA (ONTARIO)
THEWESTMOUNTCONDO.COM

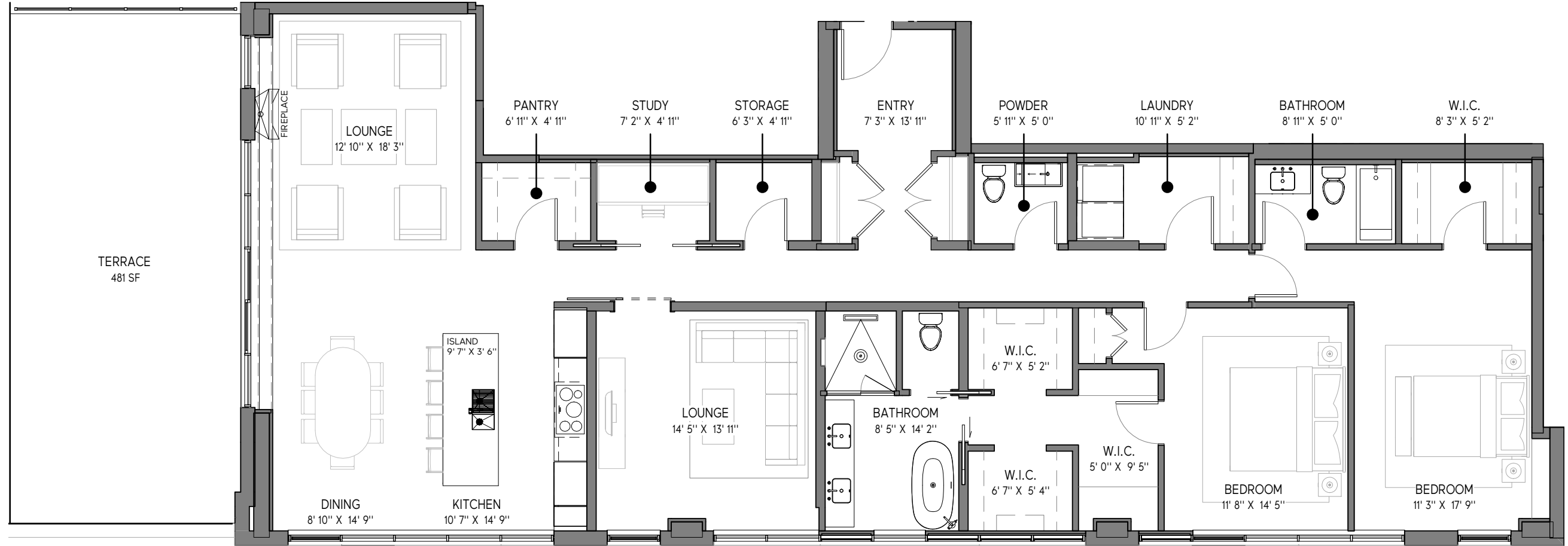
PENTHOUSE PH 3

FIFTH FLOOR
TWO BEDROOM
2294 SQ FT INTERIOR
481 SQ FT EXTERIOR

SALES GALLERY
BY APPOINTMENT ONLY
411 ROOSEVELT AVENUE
SUITE 300
OTTAWA (ONTARIO)

EXCLUSIVE MARKETING & SALES AGENTS

LUIGI AIELLO
& ROCCO MANFREDI
ROYAL LEPAGE TEAM
REALTY BROKERAGE
(613) 729-9090



SUITE PLAN



FIFTH FLOOR KEY PLAN

